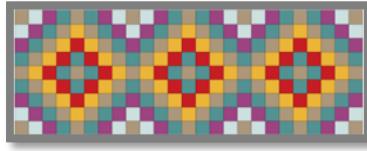
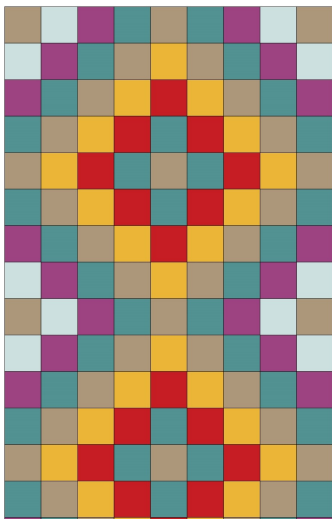


Mosaic Table Runner  
2 Panels EasyPiecing Grid™

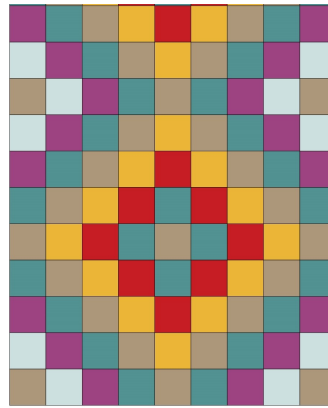


1" FINISHED SQUARES 9" x 25" top (CUT 1 1/2" SQUARES)  
 1 1/2" FINISHED SQUARES 13.5" x 37" (CUT 2" SQUARES)  
 2" FINISHED SQUARES 18" x 50" (CUT 2 1/2" SQUARES)

Layout









PANEL 1



PANEL 2

Squares

	57
	20
	32
	56
	36
	24

Important Tips:

- \*Make sure FUSIBLE SIDE OF GRID IS FACING UP!
- \*Use Elmer's Glue stick or Mini iron for tacking down squares
- \*Press with STEAM to make sure squares are secure before sewing
- \* Follow EasyPiecing Instructions to complete your project!

TenSisters  
HANDICRAFT

