




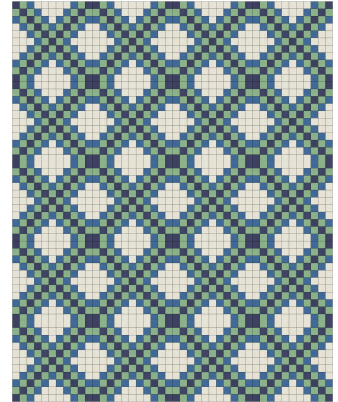
# Triple Irish Chain- Correction of quilt sizes, yardage, and squares to cut

2 Inch Finished -- Cut 2 1/2" Squares 88" x 110" before borders

1.5 Inch Finished-- Cut 2" Squares 66" X 82.5" before borders

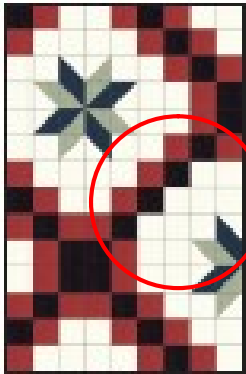
1 Inch Finished- Cut 1 1/2" Squares: 44" x 55" before borders

	Squares	2"	1 1/2"	1"
	420	3 1/2 yards	2 yard	1 1/4 yards
	720	2 yards	1 1/4 yards	5/8 yard
	560	2 1/2 yards	1 1/2 yards	1 yard
	720	3 1/2 yards	2 yards	1 1/4 yards

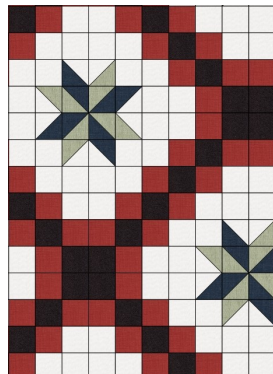


Optional Border: 1 yard – 2 1/2 yards

Glory Road page 39: Section 7 is missing three red squares



7



7